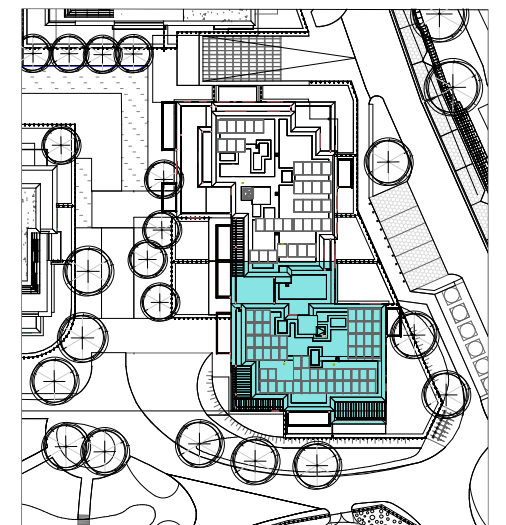
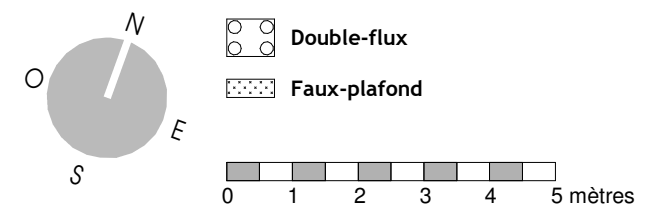


Unité	Nbre CH.	Surface (+/-m2)
ENH22B41	1CH	55.48 m ²
	Balcon	7.60 m ²
ENH22B42	2CH.	92.73 m ²
	Balcon	11.30 m ²
ENH22B43	2CH	89.82 m ²
	Balcon	9.07 m ²
ENH22B44	2CH.	86.95 m ²
	Balcon	9.60 m ²



LEGENDE



Stade COM
06/07/23
Transmis

MAITRE DE L'OUVRAGE :
Thomas & Piron Bâtiment s.a.
5, Rue Fort d'Andoy - 5100 Wierde



assar
inclusive architecture



Jambes - Parc d'Enhaive
BAT 2

INDICE

ECHELLE

1/115

FEUILLE
13 / 18

Bloc B - R+4

PLAN N°
ENH-2-AR-COM-140-B